

INSTALLATION GUIDE

**Hytrol Conveyor Company, Inc. • 2020 Hytrol Drive •
Jonesboro, AR 72401
870.935.3700 • www.hytrol.com**

INTRODUCTION

Hytrol's "Plug-N-Go" control wiring is designed for use with standard control solutions offered by Hytrol, such as ProLogix Sortation Control for the ProSort 100, ProSort 400, ViperSort, SC, and ZipLogix Merge Control. Plug-N-Go control wiring provides the advantages of network controls with the reliability of "hard-wired" solutions. All inputs and outputs on the sorter simply plug into the strategically located distribution blocks along the sorter. These distribution blocks in turn are plugged into the sorter control panel via "home run" cables. This Plug-N-Go wiring solution provides quick installation, reduces field wiring costs, and provides a quicker, more trouble-free startup than conventional wiring methods.

With the Plug-N-Go solution, “wiring troughs” are provided for a means of running cables down the length of the sorter. This guide is intended to provide an explanation of installing this equipment.

Wiring troughs will be provided in lengths equal to section lengths of the sorter. These are known as “Intermediate Trough Kits”. (See Chart 1) This kit will include the length of wiring trough and necessary hardware. These wiring troughs will be placed end to end in a manner which allows for the ends to meet in the middle of a support channel. (fig. 1)

The first length at the infeed will be included in a kit known as “Infeed Trough Kit”.(See Chart 2) This kit will include a section of wiring trough 42 inches long and necessary hardware.(fig. 3) The last length of wiring trough before the catenary area will be included in a kit known as “Discharge Trough Kit”.(See Chart 3) This will include a section of wiring trough equal to the last bed section length minus 42 inches, and necessary hardware.(fig. 4)

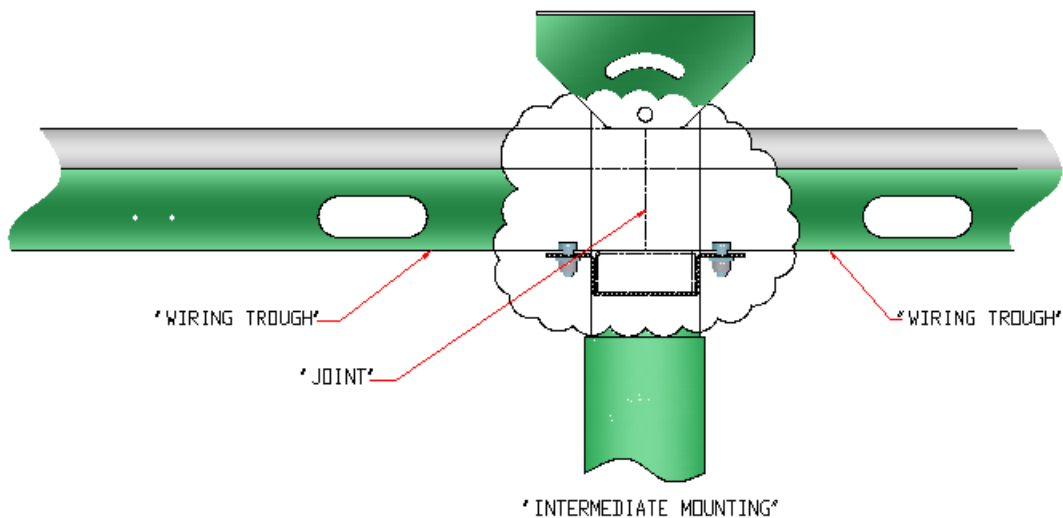
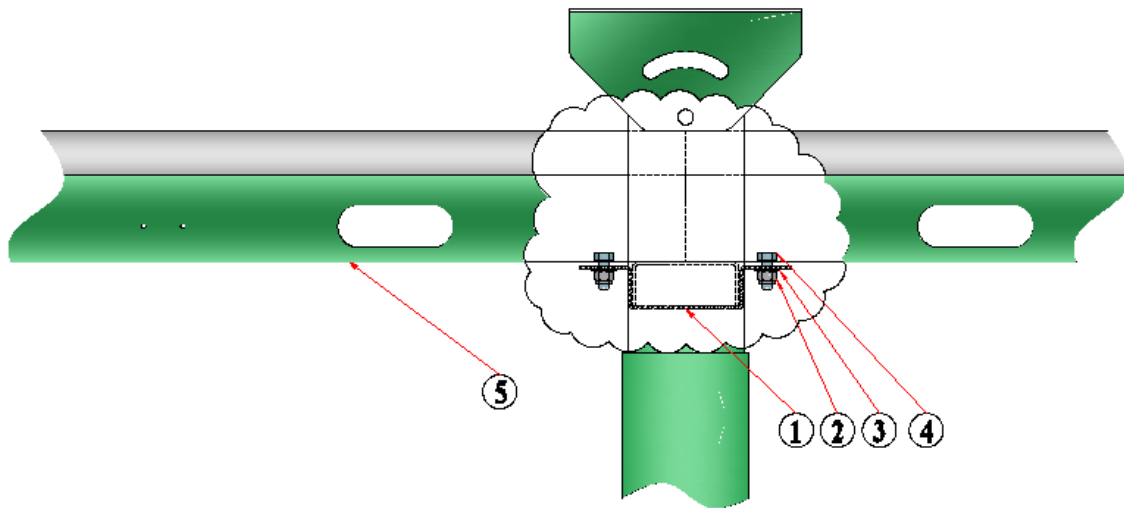


fig. 1

Once the wiring troughs have been placed in position, they can be secured to the support with the provided hardware. The hardware for securing adjoining wiring troughs is included in the “*Intermediate Trough Kit*”. (Chart 1) This is known as “*Intermediate Mounting*”. (fig. 2)



“INTERMEDIATE MOUNTING”

fig. 2

INTERMEDIATE TROUGH KIT			
Hytrol Part No. SA-030308			
INCLUDES:			
REF. #	QTY.	DESCRIPTION	HYTROL PART. NO.
1	1	FULL BRACKET	PT-069251
2	2	3/8-16 NC2B HEX LOCKNUT - NYLON INSERT, ZP	041.798
3	2	5/16" ID (3/8" BOLT) FLAT STEEL WASHER, ZP	043.101
4	2	3/8-16 x 1" LG HEX HEAD CAP SCREW, ZP	040.303
5	1	TROUGH	PT-069078-xxx

Chart 1

The hardware for securing wiring troughs located at the infeed end is included in the “Infeed Trough Kit”.(Chart 2) This is known as “Infeed Mounting”. (fig. 3)

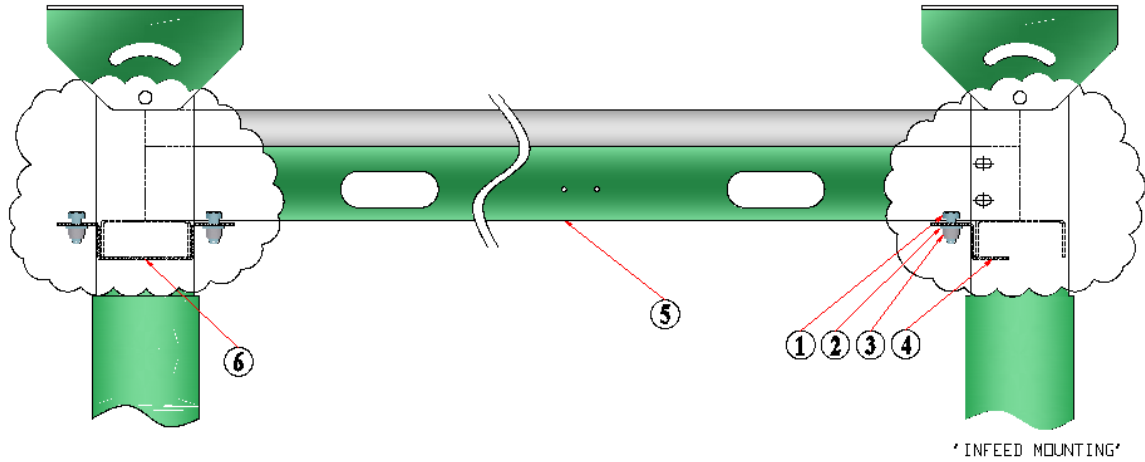


fig. 3

INFEED TROUGH KIT			
<i>Hytrol Part No. SA-030309</i>			
INCLUDES:			
REF. #	QTY.	DESCRIPTION	HYTROL PART. NO.
1	1	3/8-16 x 1" LG HEX HEAD CAP SCREW, ZP	040.303
2	1	5/16" ID (3/8" BOLT) FLAT STEEL WASHER, ZP	043.101
3	3	3/8-16 NC2B HEX LOCKNUT - NYLON INSERT, ZP	041.798
4	3	HALF BRACKET	PT-069252
5	3	TROUGH	REFER DWG SA-030611
6	1	FULL BRACKET	PT-069251

Chart 2

The hardware for securing wiring troughs located at the discharge end, near the catenary, is included in the “Discharge Trough Kit”.(Chart 3) This is known as “Discharge Mounting”. (fig. 4)

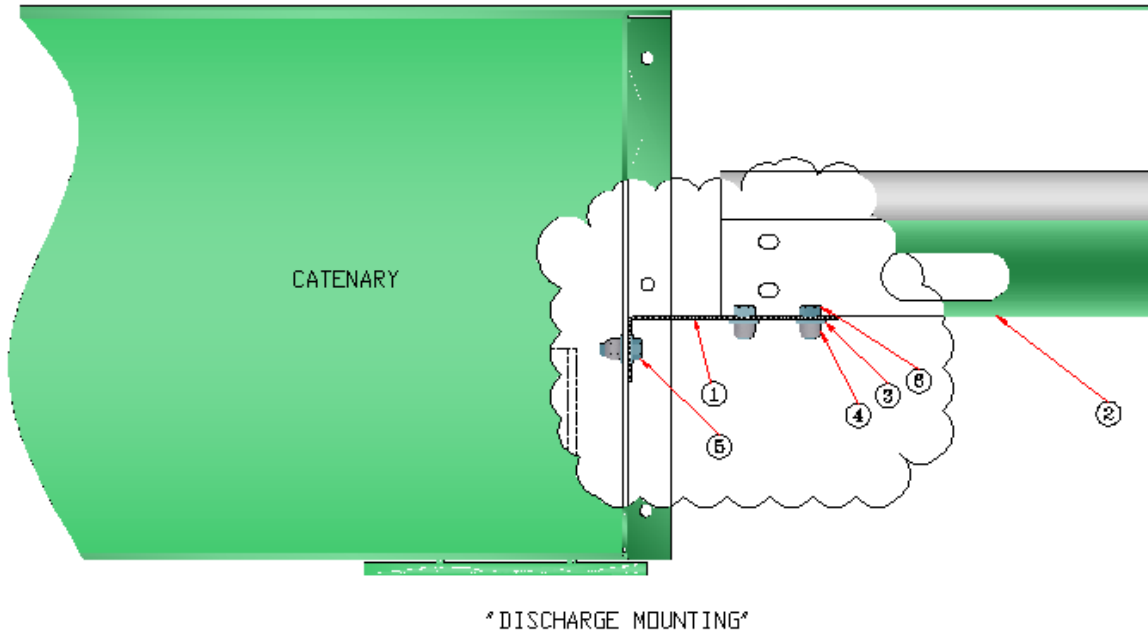
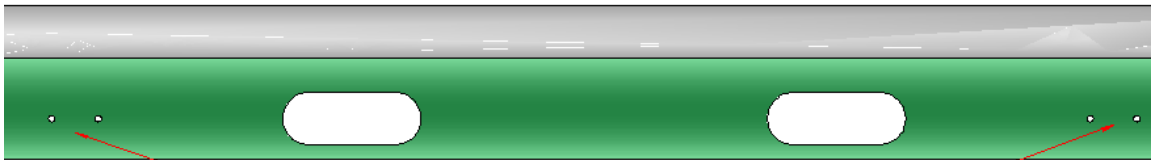


fig. 4

DISCHARGE TROUGH KIT			
Hytrol Part No. SA-030611			
INCLUDES:			
REF. #	QTY.	DESCRIPTION	HYTROL PART. NO.
1	1	BRACKET	PT-070068
2	1	TROUGH	REFER DWG. SA-030611
3	4	5/16" ID (3/8" BOLT) FLAT STEEL WASHER, ZP	043.101
4	3	3/8-16 NC2B HEX LOCKNUT - NYLON INSERT, ZP	041.798
5	1	3/8-16 x 1" LG HEX HEAD CAP SCREW, ZP	040.302
6	2	3/8-16 x 3/4" LG HEX HEAD CAP SCREW, ZP	040.302

Chart 3

Once you have the wiring trough secured in place, then you can mount the Plug-N-Go I/O blocks to the sides of the wiring trough. There are holes provided in the side of the wiring trough (*fig. 5*) which match the holes in the I/O block. (*fig. 7*). You will need to refer to the Controls Electrical Diagrams to determine where on the trough the I/O block will need to be placed.



I/O BLOCK MOUNTING HOLES

fig. 5

All I/O Blocks need to be mounted with the 19 pin connector pointing towards the electrical control panel.(fig. 6) The *Homerun Cable* will then be laid in the trough, and the connector routed through the provide slot to the outside. The *Homerun Cable* connector will then be connected to the I/O Block.

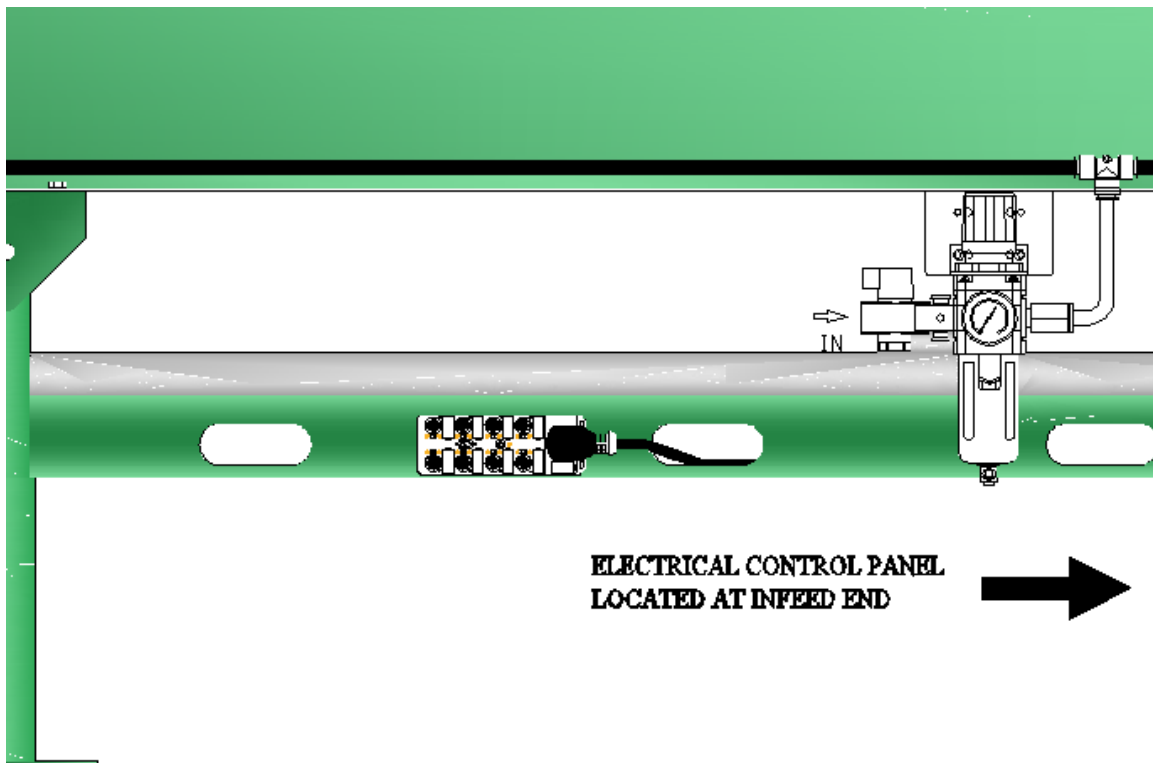


fig. 6

All devices on the sorter will then connect to their corresponding port on the I/O Block. Refer to Controls Electrical Diagram for connections. (fig. 7)

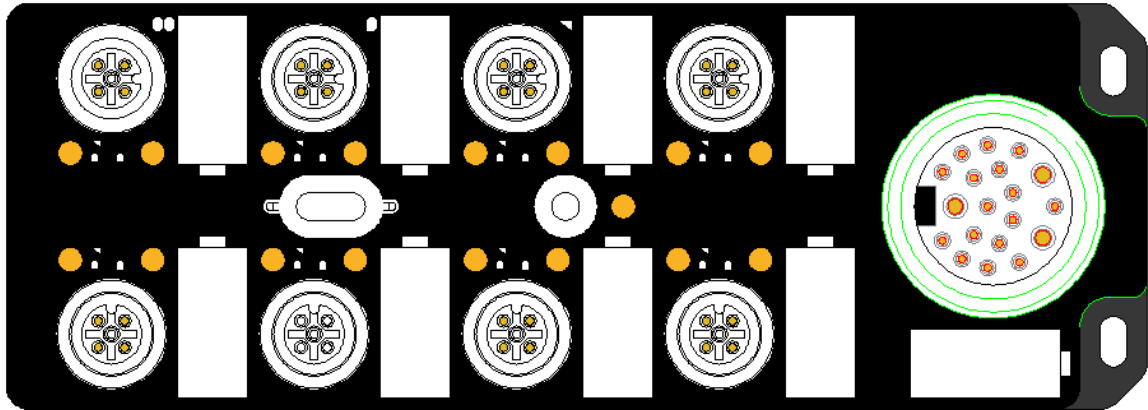


fig. 7

Once the cables are connected, the provided cover can be snapped onto the top of the wiring trough to protect the cables inside. The cover comes in 10' lengths and the Hytrol Part No. is 036.090. (fig. 8)

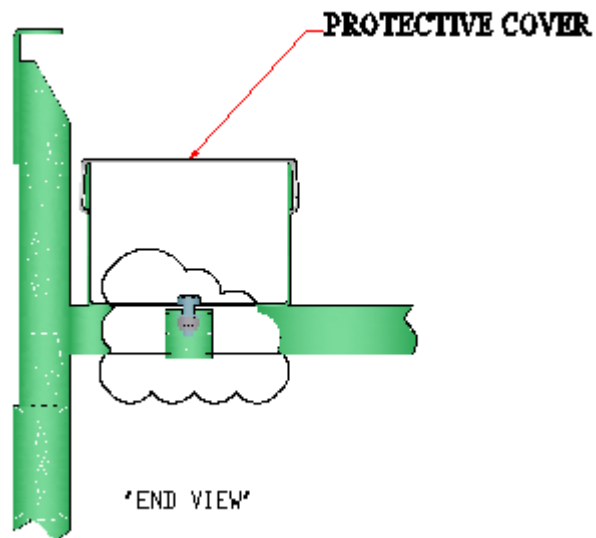


fig. 8