

36-CRRH

Heavy Duty Chain Driven Live Roller with Hex Shaft (Roll-to-Roll Type)

The Model 36-CRRH is a heavy-duty, chain driven roller conveyor. Its tough, rugged design allows it to provide service under demanding manufacturing operations. Use the 36-CRRH for conveying heavy pallets and drums.

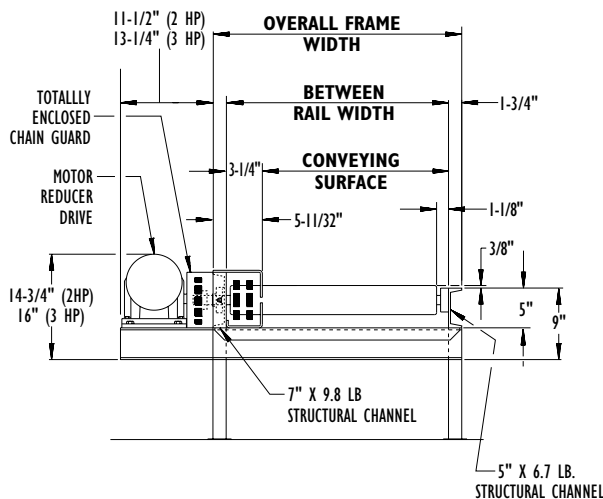
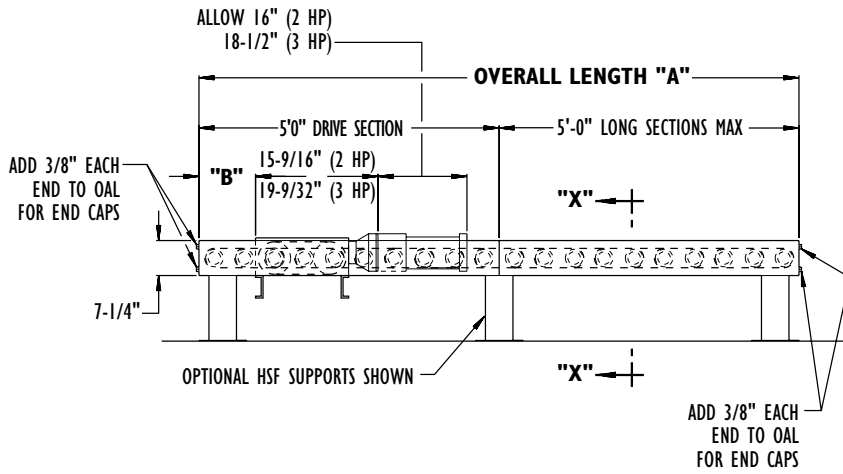
- 12 Bed Widths
- Center Drive
- Energy Efficient Motor - AC Variable Speed Controller
- Reversible
- Chain Driven Rollers
- Fixed HSF-Type Floor Supports Available



Conveyor shown with optional floor supports

| SIZE TO ORDER Overall Length "A" | Conveying Surface | 19 3/4" | 21 3/4" | 23 3/4" | 27 3/4" | 29 3/4" | 33 3/4" | 35 3/4" | 41 3/4" | 47 3/4" | 53 3/4" | 55 3/4" | 63 3/4" |
|--|---------------------|-----------|-----------|-----------|-----------|-----------|-----------|-----------|-----------|-----------|-----------|-----------|-----------|
| | Between Rail Width | 23" | 25" | 27" | 31" | 33" | 37" | 39" | 45" | 51" | 57" | 59" | 67" |
| | Overall Frame Width | 26 27/32" | 28 27/32" | 30 27/32" | 34 27/32" | 36 27/32" | 40 27/32" | 42 27/32" | 48 27/32" | 54 27/32" | 60 27/32" | 62 27/32" | 70 27/32" |
| 10' | 6" R/C | 1284 | 1336 | 1387 | 1490 | 1541 | 1644 | 1695 | 1849 | 2003 | 2157 | 2208 | 2412 |
| Per Foot | | 99 | 103 | 107 | 115 | 119 | 127 | 131 | 143 | 155 | 167 | 186 | 206 |
| 10' | 12" R/C | 1044 | 1076 | 1108 | 1172 | 1204 | 1268 | 1300 | 1396 | 1492 | 1588 | 1620 | 1748 |
| Per Foot | | 75 | 78 | 81 | 87 | 90 | 96 | 99 | 108 | 117 | 126 | 129 | 141 |

All weights in catalog are conveyor weights only. Accessories, crating, etc., are not included.



| Roller Centers | "B" |
|----------------|---------|
| 6" | 22 3/4" |
| 12" | 25 3/4" |

• STANDARD SPECIFICATIONS

BED—Roller bed with 3 ½ in. x .300 in. wall unplated tread rollers with 1 ¼ in. hex shaft spaced every 6 in. or 12 in. Mounted in 5 ft. long powder painted structural steel channel frame bolted together with butt couplings.

CENTER DRIVE—Top side mounted drive, mounted to 5 ft. long section near center of conveyor. Chain guard located on left hand side.

DRIVE CHAIN—No. 60 roller chain.

CHAIN GUARD—Formed steel upper & lower chain guard mounted to top and bottom of channel frame to totally enclose drive chains.

BEARINGS—Sealed, pre-lubricated ball bearings.

SPEED REDUCTION—Heavy-duty sealed worm gear C-Face speed reducer. No. 80 roller chain to drive shaft.

MOTOR—2 HP—230/460V—3 Ph. 60 Hz. Energy Efficient C-Face motor and AC Variable Speed controller with softstart capability.

CONVEYING SPEED—Variable 3-30 FPM.

CAPACITY—Maximum load per linear foot of conveyor 2000 lbs. with supports on 5 ft. centers. NOT TO EXCEED CAPACITY IN CHART.

FLOOR SUPPORTS—Now supplied as optional equipment.

| LOAD CAPACITY CHART @ 30 FPM | | | | | | | | | |
|------------------------------|------------------------|-----------|-----------|------------------------|-----------|-----------|------------------------|-----------|-----------|
| HP | OVERALL FRAME WIDTH | | | OVERALL FRAME WIDTH | | | OVERALL FRAME WIDTH | | |
| | 26 27/32" to 30 27/32" | | | 34 27/32" to 42 27/32" | | | 48 27/32" to 62 27/32" | | |
| | TOTAL LOAD (Lbs.) | | | TOTAL LOAD (Lbs.) | | | TOTAL LOAD (Lbs.) | | |
| | UP TO 30' | UP TO 60' | UP TO 90' | UP TO 30' | UP TO 60' | UP TO 90' | UP TO 30' | UP TO 60' | UP TO 90' |
| 2 | 21000 | 19200 | 17400 | 20400 | 18000 | 15600 | 19400 | 16000 | 12500 |
| 3 | 27000 | 25200 | 23400 | 26400 | 24000 | 21600 | 25400 | 22000 | 18500 |

Note: Capacities based on Hytrol supplied chain.

• OPTIONAL EQUIPMENT

FLOOR SUPPORTS—HSF Type floor supports are available with a wide range of adjustment. Specify top of belt or roller elevation. One support required at every bed joint and ends of conveyor. Holes in feet for lagging to floor. Knee braces recommended above HSF-6 support.

CONVEYING SPEED—Other constant and variable speeds.

NOTE: Capacity affected with speed change. Contact factory.

MOTORS—3 HP maximum.

ELECTRICAL CONTROLS—Push-button stations.