

# 190-NSP

## Live Roller Conveyor

The Model 190-NSP Live Roller Spool Conveyor is a general transport conveyor with the capabilities of accumulating products with back pressure. Quiet operation, versatile design, easy installation and maintenance make the 190-NSP conveyor a valuable component in operations requiring high performance with minimal downtime.

- 12 Bed Widths
- Reversible
- Adjustable MS-Type Floor Supports Available

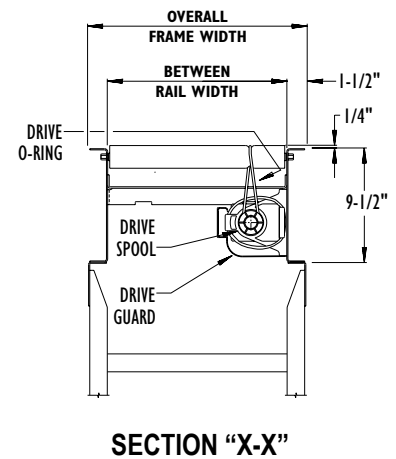
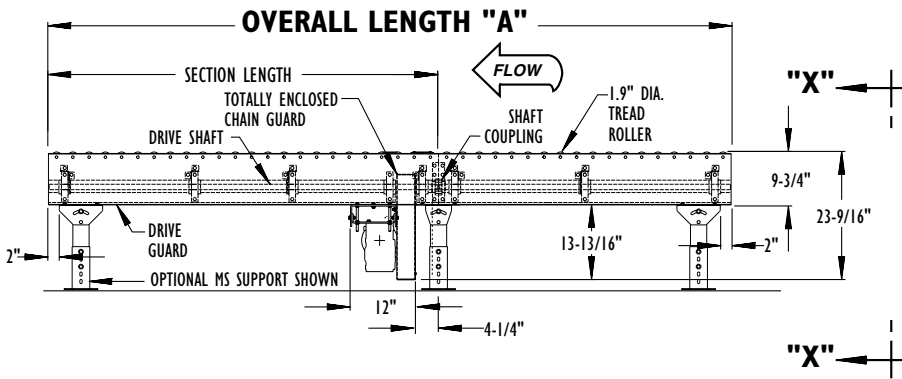


Conveyor shown with optional floor supports



| SIZE TO ORDER<br>Overall Length "A" | Between Rail Width                                      | 13"  | 15"  | 17"  | 19"  | 21"  | 23"  | 25"  | 27"  | 31"  | 33"  | 37"  | 39"  |
|-------------------------------------|---|------|------|------|------|------|------|------|------|------|------|------|------|
|                                     | Overall Frame Width                                     | 16"  | 18"  | 20"  | 22"  | 24"  | 26"  | 28"  | 30"  | 34"  | 36"  | 40"  | 42"  |
| 5'                                  | WEIGHTS<br>(Lbs.)<br>Weights Based on 3" Roller Centers | 229  | 236  | 249  | 259  | 272  | 284  | 293  | 307  | 329  | 341  | 364  | 376  |
| 10'                                 |   | 371  | 384  | 409  | 426  | 450  | 472  | 488  | 514  | 553  | 576  | 618  | 639  |
| 15'                                 |   | 513  | 533  | 569  | 594  | 629  | 660  | 684  | 721  | 778  | 811  | 872  | 902  |
| 20'                                 |   | 655  | 682  | 729  | 761  | 808  | 848  | 880  | 928  | 1003 | 1046 | 1126 | 1166 |
| 25'                                 |   | 797  | 830  | 889  | 929  | 987  | 1036 | 1076 | 1135 | 1228 | 1281 | 1380 | 1429 |
| 30'                                 |   | 939  | 979  | 1049 | 1096 | 1166 | 1224 | 1271 | 1342 | 1453 | 1517 | 1634 | 1692 |
| 35'                                 |   | 1082 | 1128 | 1209 | 1264 | 1344 | 1413 | 1467 | 1549 | 1678 | 1752 | 1888 | 1956 |
| 40'                                 |   | 1224 | 1276 | 1369 | 1431 | 1523 | 1601 | 1663 | 1756 | 1903 | 1987 | 2142 | 2219 |
| 45'                                 |   | 1366 | 1425 | 1529 | 1599 | 1702 | 1789 | 1859 | 1963 | 2127 | 2222 | 2396 | 2483 |
| 50'                                 |   | 1508 | 1574 | 1689 | 1767 | 1881 | 1977 | 2054 | 2170 | 2352 | 2458 | 2650 | 2746 |
| 55'                                 |   | 1650 | 1723 | 1849 | 1934 | 2060 | 2165 | 2250 | 2377 | 2577 | 2693 | 2904 | 3009 |
| 60'                                 |   | 1793 | 1871 | 2009 | 2102 | 2239 | 2354 | 2446 | 2584 | 2802 | 2928 | 3158 | 3273 |
| 65'                                 |   | 1935 | 2020 | 2169 | 2269 | 2417 | 2542 | 2642 | 2791 | 3027 | 3163 | 3412 | 3536 |
| 70'                                 |   | 2077 | 2169 | 2329 | 2437 | 2596 | 2730 | 2837 | 2998 | 3252 | 3399 | 3666 | 3800 |
| 75'                                 |   | 2219 | 2317 | 2489 | 2604 | 2775 | 2918 | 3033 | 3205 | 3477 | 3634 | 3920 | 4063 |
| 80'                                 |   | 2361 | 2466 | 2649 | 2772 | 2954 | 3106 | 3229 | 3412 | 3702 | 3869 | 4174 | 4326 |
| 85'                                 | 2503  | 2615 | 2809 | 2939 | 3133 | 3294 | 3425 | 3619 | 3926 | 4104 | 4428 | 4590 |      |
| 90'                                 | 2646  | 2764 | 2969 | 3107 | 3311 | 3483 | 3621 | 3826 | 4151 | 4340 | 4682 | 4853 |      |
| 95'                                 | 2788  | 2912 | 3129 | 3274 | 3490 | 3671 | 3816 | 4033 | 4376 | 4575 | 4936 | 5117 |      |
| 100'                                | 2930  | 3061 | 3289 | 3442 | 3669 | 3859 | 4012 | 4240 | 4601 | 4810 | 5190 | 5380 |      |

All weights in catalog are conveyor weights only. Accessories, crating, etc., are not included.



## • STANDARD SPECIFICATIONS

**BED**—Roller bed with 1.9 in. dia. roller x 16 ga. galvanized tube spaced every 3 in. Mounted in 9 1/2 in. x 12 ga. powder painted formed steel channel frame bolted together with splice plates.

**CROSS BRACING**—Rods with turnbuckles are fastened to underside of bed to provide proper alignment of bed rollers and insure correct product tracking. Supplied on every other section 30 ft. bed lengths and over.

**DRIVE**—Mounted underneath, placed near center of conveyor. **NOTE:** On Conveyors less than 24 in. OAW motor extends beyond frame. Chain guard located on left hand side.

**DRIVE SHAFT**—1 in. dia. steel shaft extends full length of conveyor. Chain coupling at bed joints. Located on left hand side.

**DRIVE SPOOLS**—2 in. dia. Delrin spool held in place on drive shaft with spool spacers.

**DRIVE GUARD**—Underside of drive shaft with spools and drive o-rings guarded full length of conveyor.

**DRIVE O-RING**—3/16 in. dia. polyurethane o-ring from drive spool to tread rollers.

**BEARINGS**—Sealed, pre-lubricated, self-aligning, ball bearings with eccentric lock collar on drive shaft. Pre-lubricated ball bearings in tread rollers.

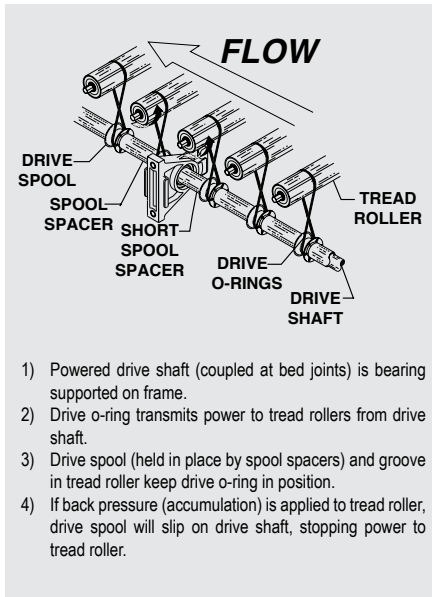
**SPEED REDUCTION**—Sealed worm gear C-Face speed reducer. No. 50 roller chain to drive shaft.

**MOTOR**—1/2 HP—208/230/460/575V—3 Ph. 60 Hz Totally Enclosed C-Face.

**CONVEYING SPEED**—Constant 65 FPM.

**CAPACITY**—Maximum load per powered roller—15 lbs. **NOTE:** Maximum load capacity will be less for products with soft or irregular bottoms. Total load NOT TO EXCEED capacity in chart.

**FLOOR SUPPORTS**—Now supplied as optional equipment.



| HP  | OVERALL FRAME WIDTH 16" to 22" |           |            | OVERALL FRAME WIDTH 24" to 30" |           |            | OVERALL FRAME WIDTH 34" to 42" |           |            |
|-----|--------------------------------|-----------|------------|--------------------------------|-----------|------------|--------------------------------|-----------|------------|
|     | TOTAL LOAD (Lbs.)              |           |            | TOTAL LOAD (Lbs.)              |           |            | TOTAL LOAD (Lbs.)              |           |            |
|     | UP TO 60'                      | UP TO 90' | UP TO 120' | UP TO 60'                      | UP TO 90' | UP TO 120' | UP TO 60'                      | UP TO 90' | UP TO 120' |
| 1/2 | 1550                           | 580       | —          | 1340                           | 250       | —          | 1020                           | —         | —          |
| 1   | *3600                          | 4090      | 3110       | *3600                          | 3770      | 2680       | *3600                          | 3280      | 2040       |
| 2   | —                              | —         | *7200      | —                              | —         | *7200      | —                              | —         | *7200      |

\*Limited to 15 lbs. per driven roller.

**NOTE:** Capacity in Chart based on 3 in. roller centers with all rollers powered.

| FPM      | 30-44 | 45-120 |
|----------|-------|--------|
| HP (MAX) | 1     | 2      |

If the required horsepower exceeds the maximum horsepower shown in the chart, more than one drive is required

## • OPTIONAL EQUIPMENT

**FLOOR SUPPORTS**—MS Type floor supports are available with a wide range of adjustment. Specify top of belt or roller elevation. One support required at every bed joint and ends of conveyor. Holes in feet for lagging to floor. Knee braces recommended above MS-6 support.

**CONVEYING SPEED**—Other constant and variable speeds from 30 to 120 FPM. Over 120 FPM timing belt drive recommended. Capacity affected with speed change.

**SIDE MOUNTED DRIVE**—with Hytrol Reducer.

**SIDE MOUNTED DRIVE**—with Gearmotor.

**O-RING DRIVE CHAIN**—With sealed in lubricant (Recommended for applications that do not permit regular lubrication).

**LOW ELEVATION DRIVE**—Gearmotor mounted inside of conveyor. Minimum elevation 11 1/4 in.

**POSITIVE DRIVE**—Spools are keyed to drive shaft in positive drive areas.

**CROSSOVER**—Separate section relocates drive shaft from one side of conveyor to the other. Minimum Elevation—12 3/8 in.

**ONE DIRECTION O-RING TRANSFER**—See Conveyor Accessories.

**REVERSING O-RING TRANSFER**—See Accessories section.

**GUARD RAILS**—Adjustable Universal Channel Guard Rail, fixed channel or type A & B angle. **Note:** If product comes in contact with guard rails, product flow will be affected. Fixed channel overlapping, one direction. Fixed channel non-overlapping, reversing.

**PACKAGE STOPS**—Blade, roller or pin type stops available, contact factory.

**POLY-TIER SUPPORTS**—36 in. to 120 in. support heights in 6 in. increments. Knee braces supplied.

**CEILING HANGERS**—5/8 in. dia. x 8 ft. long unplated rods fully threaded. Other lengths and galvanized rods available.

**MOTORS**—Energy efficient, single phase, brakemotor, other characteristics. 2 HP maximum.

**ELECTRICAL CONTROLS**—Non-reversing or reversible magnetic starters and push-button stations. AC variable frequency drive.