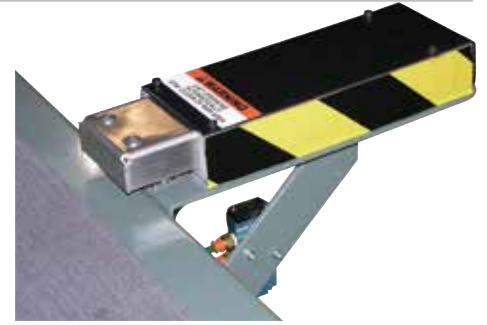


SYSTEMS ACCESSORIES

LIGHT DUTY PUSHER

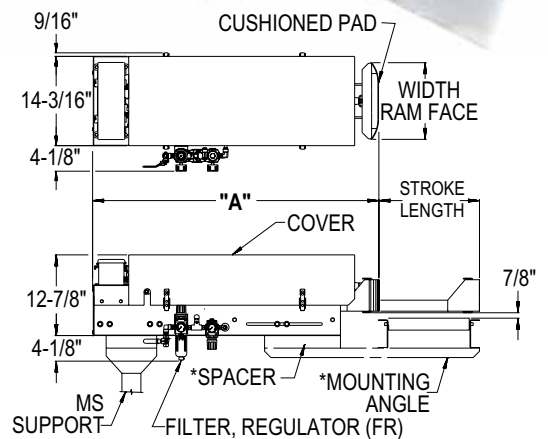
Hytrol's LD Pusher is a light duty pusher designed to easily mount to the side on many conveyor models. The LD Pusher provides an economical solution for pushing lightweight products off at a right angle to product flow. Ideally used for reject or inspection stations. The LD Pusher is not designed for high cycle applications.

- 7", 10", or 15" Stroke (Specify)
- Aluminum Pusher Face
- 15 lb. Maximum Carton Weight
- Mounting Hardware
(Specify Conveyor Model & Overall Width)
- Less Electrical Controls Required To Actuate Pusher



HIGH SPEED PUSHER

The HSP provides high speed automatic product diversion. Product may be diverted 90° onto another conveyor, chute, etc. Special two-valve pneumatic control system provides smoother operation at speeds up to 45 cycles per minute. Cycle time varies with weight of product and stroke.



Specify conveyor model, overall width and elevation for proper mounting kit.

STROKE LENGTH	"A"
14" TO 18"	45"
18" TO 24"	51"
24" TO 30"	57"

• STANDARD SPECIFICATIONS

CAPACITY—75 lbs. maximum package weight.

CYCLES—Up to 45 times per minute. Cycle rate varies with package weight.

STROKE LENGTH—Available in 14 in. to 18 in., 18 in. to 24 in., or 24 in. to 30 in. ranges. May be adjusted for any length within each range.

RAM FACE—12 in., 18 in., or 24 in. wide, with 1 in. thick cushioned pad.

ELECTRICAL REQUIREMENTS—120 VAC power supply, 120 VAC Pulse actuation signal. **NOTE:** 24 Volt DC solenoids and switches available.

FILTER, REGULATOR, LUBRICATOR (FRL)—Filter, dual regulator, lubricator with safety shut-off valve, 3/8 in. NPT inlet port.

AIR CYLINDER—1 1/2 in. bore double acting.

AIR VALVES—Double solenoid and single solenoid 4-way valves.

AIR REQUIREMENTS—40 to 80 P.S.I.. Free air consumption at 60 P.S.I. -.190 cu. ft. per cycle for 14 in. to 18 in. stroke, .247 cu. ft. per cycle for 18 in. to 24 in. stroke, .304 cu. ft. per cycle for 24 in. to 30 in. stroke. **NOTE:** Include safety factor when calculating compressor size.

OVERHEAD PUSH-OFF

The Overhead Push-Off provides high speed automatic product diversion. Product may be diverted 90° onto another conveyor, chute, etc. or changed from one lane to another in parallel lines. Overhead design conserves space next to conveyor.

• STANDARD SPECIFICATIONS

CAPACITY—150 lbs. maximum package weight.

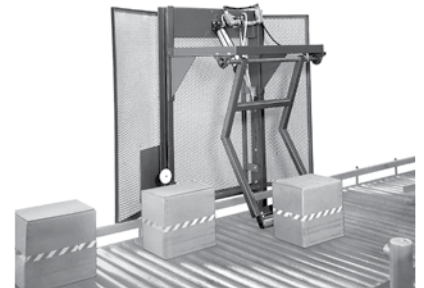
PACKAGE HEIGHT—Min. 4 1/2 in. (20 in. stroke), 6 in. (30 in. stroke)—max. 24 in.

CYCLES—Up to 20 times per minute.

PUSHER STROKE—20 in. or 30 in.

PUSHER FACE—18 in. long 1.9 in. dia. roller.

ELECTRICAL CONTROLS—Not furnished as standard equipment.



AIR CYLINDER—2 in. bore double acting.

AIR VALVE—Double solenoid 4-way valve, 1/4 in.—20 NPT valve ports. Electrical requirements 120V—1 Ph. 60 Hz., current draw is .09 amps.

AIR REQUIREMENTS—Min. pressure 60 P.S.I., max. 125 P.S.I. free air consumption at 60 P.S.I.—.105 cu. ft. per cycle for 20 in. stroke, .176 cu. ft. for 30 in. stroke.

NOTE: To eliminate contaminants in air supply line, a filter-regulator should be installed prior to the air valve (not supplied as standard).